

Coffeyville Refinery Resources and Marketing Oil Spill



Katy Miley

EPA Region 7
On-Scene Coordinator

miley.katy@epa.gov

913-551-7916



Site Description

- Coffeyville is located in southeast Kansas near the Oklahoma border
- Coffeyville Resources Refining and Marketing (CRRM), a petroleum refinery, is located on the north side of Coffeyville
- CRRM is situated just inside a flood levee, adjacent to the Verdigris River, which flows through Kansas and into Oklahoma

The Flood – June 30, 2007

- Heavy rains in June caused localized flooding and a rise in elevation of the Verdigris River
- During the night of June 30, the Verdigris River overflowed the levee around Coffeyville Kansas
- River levels rose rapidly and exceeded the height of the levee by 3.9 feet
- Flood waters entering the refinery caused a release of crude oil
 - Final approximation of release volume 90,000 gallons
- KS, OK, EPA R7, EPA R6 involved

Estimated Flood Distribution

Coffeyville, KS
7/3/07 1430

Legend

- Air Sampling Locations
- ▼ Ongoing Release
- ▼ TRI Facilities
- RMP
- Stream
- Major Road
- Interstate
- U.S. Highway
- State Highway
- Streets
- Affected Counties
- Est. Flood Extent



EPA does not warrant the accuracy, completeness, or timeliness of the information shown. The information herein is subject to revision and is not in final form. EPA shall not be liable for any detrimental reliance upon the information shown.

-DRAFT-

This map has not been submitted to the EPA peer review process

7/3/2007

EstFlood_Coffeyville_CJH_07032007_01430

0 0.25 0.5 1 Miles



Kansas/Oklahoma Flood Extent



Day One – July 1

- CRRM reported flooding and release of petroleum to the Kansas Department of Health and Environment and the NRC
- Two EPA Region 7 OSCs deployed to Coffeyville Kansas for OPA response
- Crude oil carried into Coffeyville Kansas and southward into Oklahoma
- Coke fines released from the refinery were suspended in the flood waters













Day Two – July 2

- Oil fund opened for \$ 600,000.00
- CRRM activates Oil Spill Response Organization (OSRO) contract
- Two more Region 7 OSCs were deployed to Coffeyville Kansas with the Mobile Command Post
- River water levels decreasing, but water still overtopping the levee
- Electrical, water and wastewater systems in Coffeyville affected by flooding





Day Three – July 3

- Region 6 Liason deployed to work with Region 7
- Fifth Region 7 OSC deployed
- EPA/CRRM Unified Command operational
- 2000 feet of boom deployed by CRRM OSRO
- 6 boats deployed by CRRM OSRO
- CRRM estimates 200-300 homes affected by flooding and oil





July 4 - 7

- City of Coffeyville conducts searches of 65 homes
- USCG Atlantic Strike Team members arrive
- 90 CRRM OSRO on-site
- 6000 feet of CRRM boom deployed
- Daily Ops conference calls
 - R6, R7, KDHE, ODEQ
- “Affected Area” shut down
- National Guard manned perimeter
- Water level begins to drop
- 7 Region 7 OSCs on-site





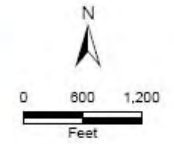
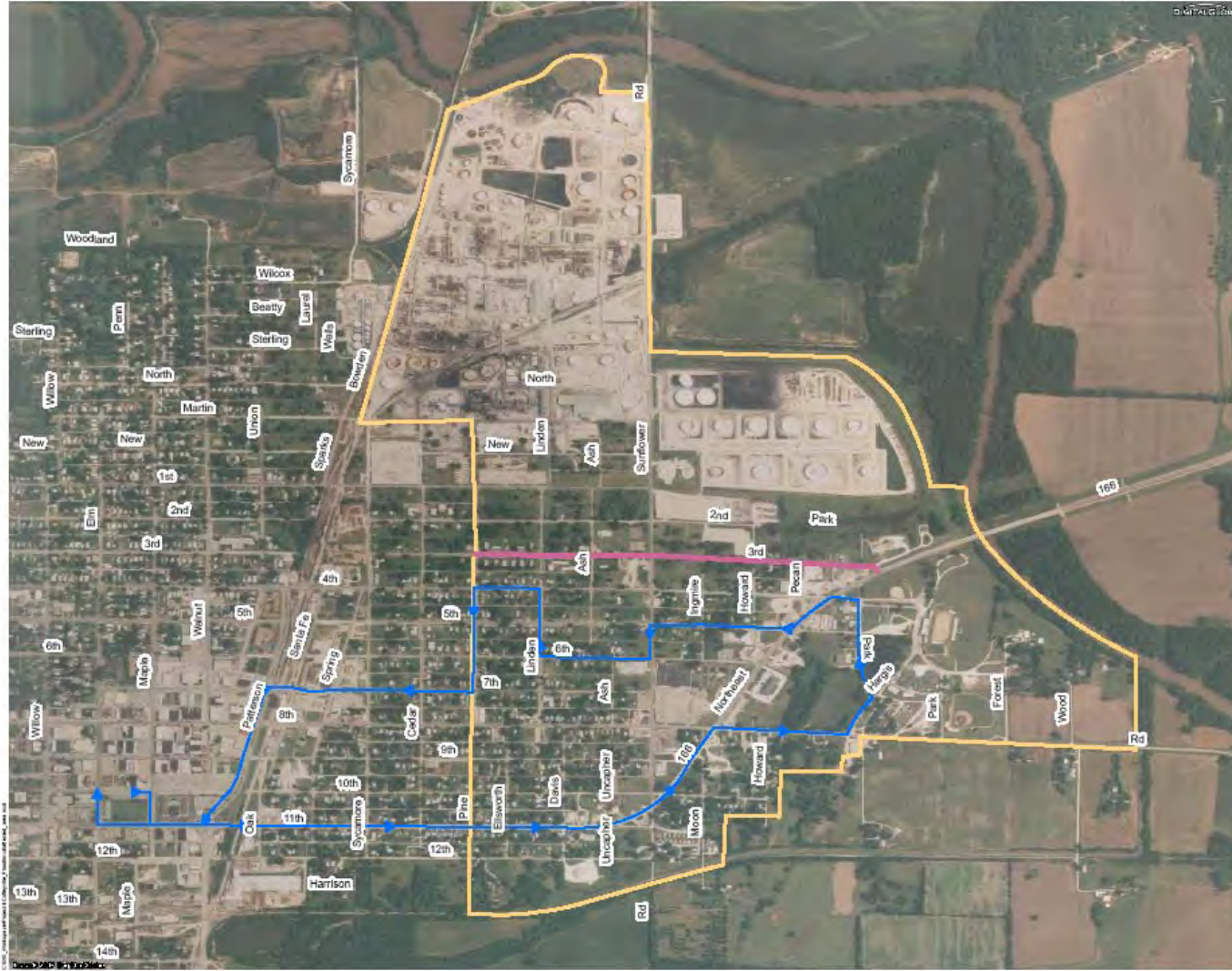






Day Seven

- Current meeting schedule
 - 0800 City of Coffeyville meeting
 - 1030 CRRM Tactical and Operations meeting
 - 1230 EPA R6, R7, KDHE, ODEQ, ATSDR conf. call
 - 1600 CRRM Situation update meeting
 - 1700 EPA R6, R7, KDHE, ODEQ, ATSDR conf. call
 - 2000 City of Coffeyville meeting



-  Affected Area
(Approximately 800
Buildings Affected)
-  3rd Street Corridor
-  Bus Tour Route

Coffeyville Flood Response
Coffeyville, Kansas

Affected Area Map





Week Two – July 8-14

- July 10 Administrative Order on Consent (AOC) signed between EPA and CRRM
- July 11 local residents allowed to re-enter properties in affected area to get valuables
- July 14 discussions ongoing with KDHE for disposal of grocery store and other special wastes
- EPA begins co-locating residential soil sampling and water sampling with CRRM sampling contractor
- CRRM offers home buyouts in affected area
- CRRM containing and collecting oil on river and creeks

COUNTY LINE

LARGE
SELECTION

AUTO SALES

REASONABLE
PRICES

251-5117





Weeks Three-Four – July 15 - 28

- July 19 KS Congressman Tiahrt visits Coffeyville, conducts overflight of flooded area
- CRRM OSRO continues collecting oil on water, oiled debris and sorbent materials
- EPA continues oversight of CRRM soil and water sampling
- CRRM begins oil removal on commercial properties with EPA oversight
- Conference call and meeting schedule ongoing



07/19/2007



August – October, 2007

- CRRM Workplan approved by EPA
- CRRM residential buy-outs ongoing
- Commercial buildings – most remediated or purchased by CRRM
- Shoreline Clean-up Assessment Team (SCAT) oiling assessments near waterways
 - SCAT members include state, EPA and CRRM representatives
- Structure demolitions planned



COUNTY LINE

LARGE
SELECTION

AUTO SALES

REASONABLE
PRICES

251-5117



November - May 2007/2008

- KS Congressman Tiahrt, EPA Administrator Johnson and Regional Administrator Askew conduct site tour and media session
- Structure demolitions of CRRM owned properties (370 total)
 - Asbestos NESHAPS compliance
- Final SCAT assessments in rural areas
- Residential area soil remediation
- Soil screening/final clearance plan accepted and implemented









Final Steps

- Several properties have been in negotiation with CRRM
- Final grading and reseeding of now CRRM owned property conducted in 2008/2009
- On-site remedial actions have been completed per the AOC
- Final R7 oil fund amount \$900,000.00
- Final report is due to EPA on July 1, 2009
 - Two year anniversary of spill

